

# Netbiter Argos



## Introduction

The Netbiter server is a secure reliable online management portal that collects and stores information from remote devices out in the field. It provides functions like monitoring, control, alarm management, historical data logging, trending, reports, data exports services and much more.

The Netbiter Argos server is completely web based and becomes one central place for easy visualization and management of your equipment. Always knowing your equipment's health and status becomes a powerful tool to be proactive to potential faults or simply increase efficiency.

It helps to avoid unnecessary traveling of service personnel to remote locations as emergency visits can often be avoided.



The Netbiter Argos server is an online management portal ([www.netbiter.net](http://www.netbiter.net)) that collects remote data to constantly monitor the health, readiness and geographical position of remote devices 24/7.

The Netbiter Argos server provides secure, reliable and easy-to-use services of remote devices anywhere in the world, whenever you want. For example, the Netbiter Argos server offers monitoring, control, alarm management, historical data logging, trending, reports, data exports services and much more.



## **True plug'n'play**

The Netbiter Argos server makes remote installations over Internet and GPRS true plug'n'play without complex work-around like special SIM-cards and VPN connections.

The solution solves important and common challenges like:

- Secure access of firewall protected equipment over the Internet without VPN or other complex work-arounds.
- No need for public and fixed IP numbers.
- Wireless connectivity with GPRS using any standard SIM card (no expensive "M2M SIM" cards needed).
- Web based alarm management, data logging, trending, read and write data.
- Easy and fast deployment, no client software, no network configuration.
- Management of large installations (users, projects, devices, backups, docu-

# Netbiter Argos

## How it Works

Many Netbiter Remote Gateways (NRG) including third party products supports communication with the Netbiter Argos server.

Authorized users get a secure and reliable bi-directional connection with remote sites that allow both reading and writing of run-time parameter data or configuration of the remote devices. The Netbiter Argos server does not require complex and costly third party applications. From a user point-of-view, the only tool needed is a common web browser in a computer or mobile phone.

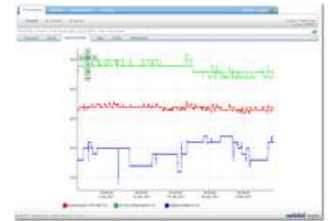
The solution supports common communication technologies like the Internet, GSM, GPRS, 3G or analog telephone lines. It automatically monitoring the health of equipment according to conditions defined by the users. This is done 24/7 and if a problem occurs, detailed alarm information will be provided to an authorized user.

The Netbiter Argos server offers many functions for management of users, projects, devices and data. Some examples are backup/restore of remote configurations and software, documentation of remote sites including file storage, performance reports and much more.



**Visualise, monitor and control**- The web based user interface provides secure access for authorized users of field installations. By creating application specific dashboards, field data from remote installations can be visually displayed and users are provided full control of equip-

**Data acquisition and historical trends**- By analyzing historical data and monitoring trends, it is possible to learn how equipment and devices perform in the field. Visualized trends make it easy to analyze field data and spot deviations. For detailed analysis, data can be exported to tools such as Microsoft Excel or similar.



**Positioning**-With the Netbiter Argos server it possible to view the location of each device in the field on a geographical map overview. The map also gives a good overview of the device health as alarms are automatically highlighted on the screen.

**Alarm management**- Netbiter Argos provides instant information regarding both current and historical alarm status of each remote site. Thresholds are configured and notifications distributed to the different users of the system, via SMS or e-mail, which allows equipment health and system operation to be monitored.



**Project management**- The project management system is an important tool for administration of equipment and users, as well as online storage and access for other project related files, such as service reports, blueprints, or project documentation.